



GMT MONTHLY MEMBERSHIP PROGRESS REPORT

Results as of: 6/30/2018

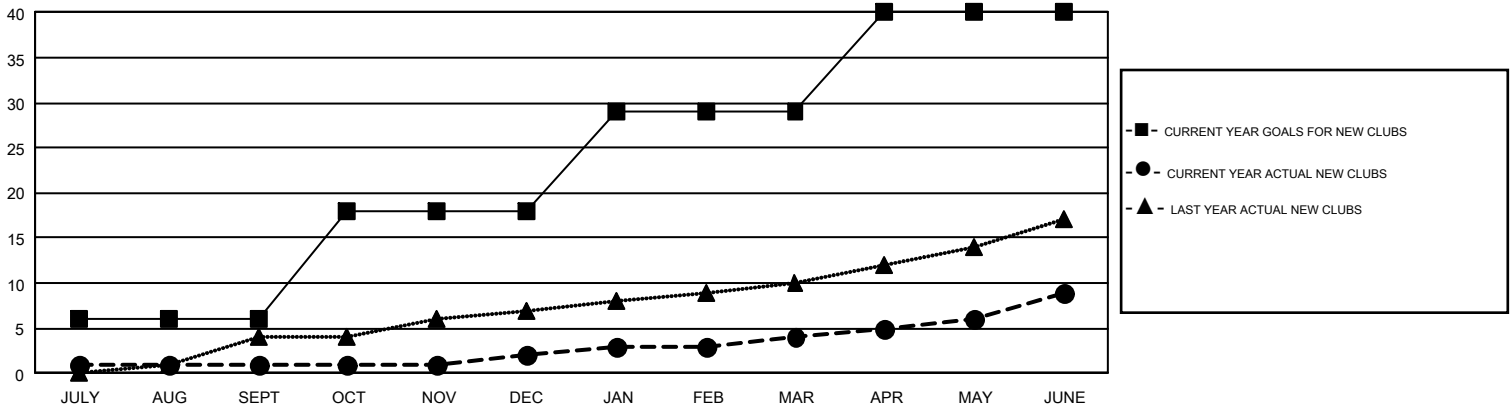
GMT Constitutional Area 1, Group C

GMT: STEVE ANTON

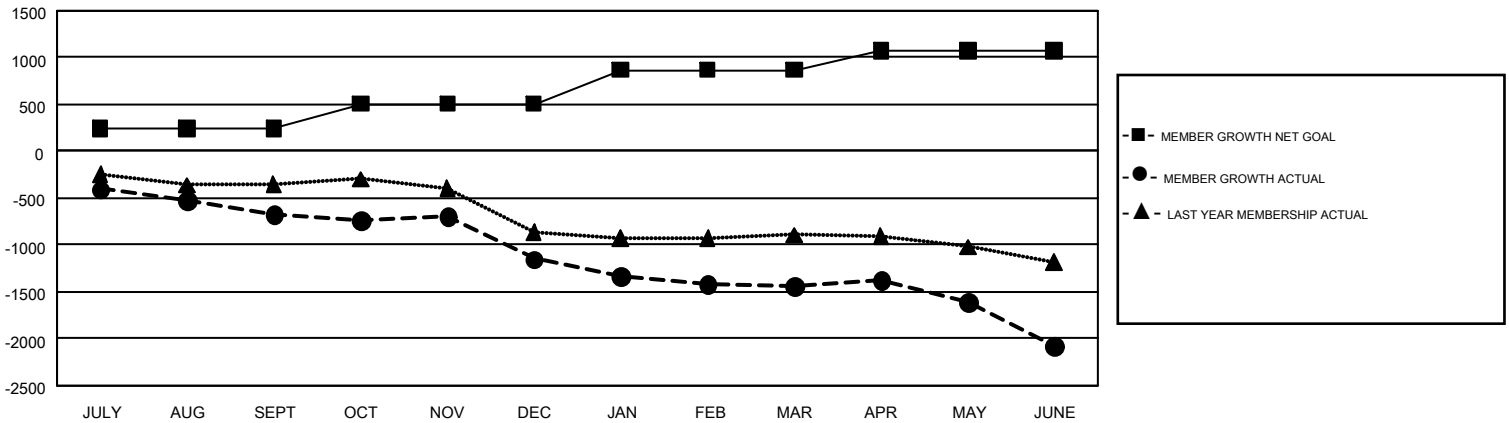
REPORT DOES NOT INCLUDE CLUBS IN UNDISTRICTED AREAS.

Clubs				Members			
RESULTS FOR 2017-2018				RESULTS FOR 2017-2018			
QUARTER	NEW CLUB GOAL	NEW CLUBS	DROPPED CLUBS	QUARTER	MEMBER GROWTH NET GOAL	MEMBER GROWTH ACTUAL	DROPPED MEMBERS ACTUAL (including transfers)
JULY/AUG/SEPT	6	1	8	JULY/AUG/SEPT	243	796	1,357
OCT/NOV/DEC	12	1	21	OCT/NOV/DEC	261	864	1,251
JAN/FEB/MAR	11	2	8	JAN/FEB/MAR	362	932	1,117
APR/MAY/JUNE	11	5	22	APR/MAY/JUNE	206	1,690	2,178

GOALS AND ACTUAL NEW CLUBS CUMULATIVE



GOALS AND ACTUAL MEMBERS CUMULATIVE



DROPPED CLUBS: 59	986 CLUBS OF 1,525 ADDED 1 OR MORE NEW MEMBERS	<u>GENDER DISTRIBUTION</u>
<u>DROPPED MEMBERS</u>	CLICK HERE FOR CUMULATIVE MEMBERSHIP DATA	MALE 28,889 (71.98%)
DECEASED 711		FEMALE 11,243 (28.02%)
CLUB CANCELLED 350		TOTAL FAMILY UNIT MEMBERS 0
OTHER 4,840		FAMILY MEMBERS PAYING HALF DUES 0
TOTAL 5,901		